



Dogwood

CLASSIC SERIES

PARKS AT PANCHASARP FARMS

321 RICHARD STREET, BURLESON, TX 76028

HOMES FROM

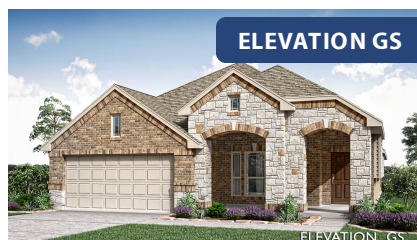
\$399,990 – \$419,990

1,840
SQUARE FEET

3
BEDROOMS

2.0
BATHROOMS

2
CAR GARAGE





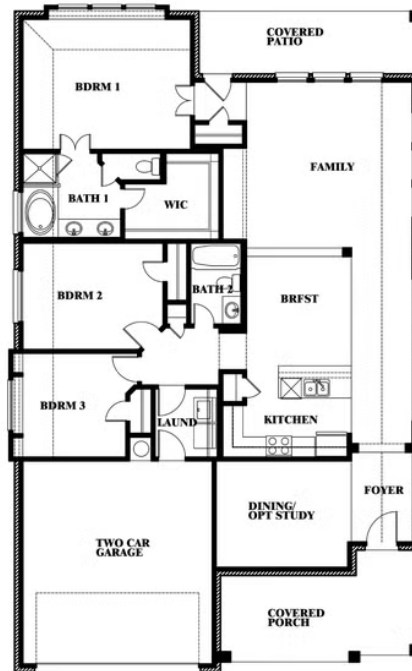
Dogwood

PARKS AT PANCHASARP FARMS

321 RICHARD STREET, BURLESON, TX 76028



Dogwood



This brochure is for general informational purposes and is to be used as a guide only. Changes may be made during the development process and floorplans, dimensions, fixtures, fittings, finishes and specifications are subject to change without notice. Window placement, balcony configuration, wardrobe sizes and living areas may vary slightly within each plan type. EQUAL HOUSING OPPORTUNITY