



3017 Creekhollow Court

DENTON, TX 76226

GLENWOOD MEADOWS

BELLFLOWER IV FLOOR PLAN

4226
SQUARE FEET**5**
BEDROOMS**4.5**
BATHROOMS**2**
CAR GARAGE

A two-story home with five bedrooms, four and a half bathrooms, dining room, study, upstairs game room and media room, plus an In-Law suite with a full ensuite bathroom, walk-in shower, separate tub, dual sinks, and two walk in closets. Additional configurations include an upstairs bedroom with or without a full bathroom in lieu of upstairs media room or first floor media room in lieu of the dining room.



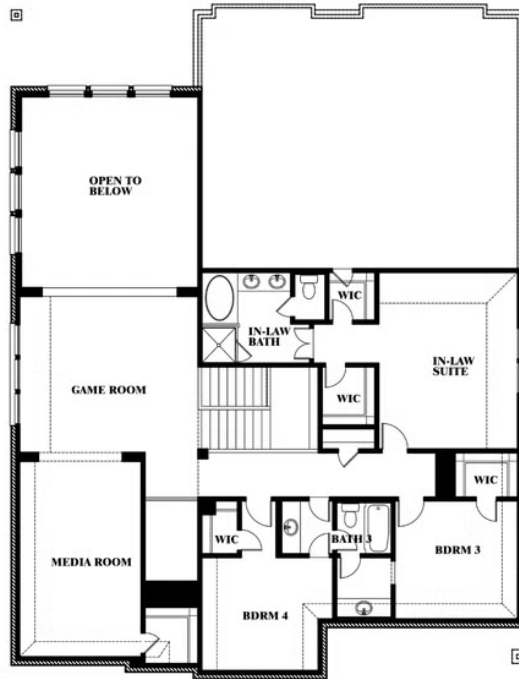
3017 Creekhollow Court

DENTON, TX 76226

BELLFLOWER IV FLOOR PLAN



Bellflower IV



This brochure is for general informational purposes and is to be used as a guide only. Changes may be made during the development process and floorplans, dimensions, fixtures, fittings, finishes and specifications are subject to change without notice. Window placement, balcony configuration, wardrobe sizes and living areas may vary slightly within each plan type. EQUAL HOUSING OPPORTUNITY



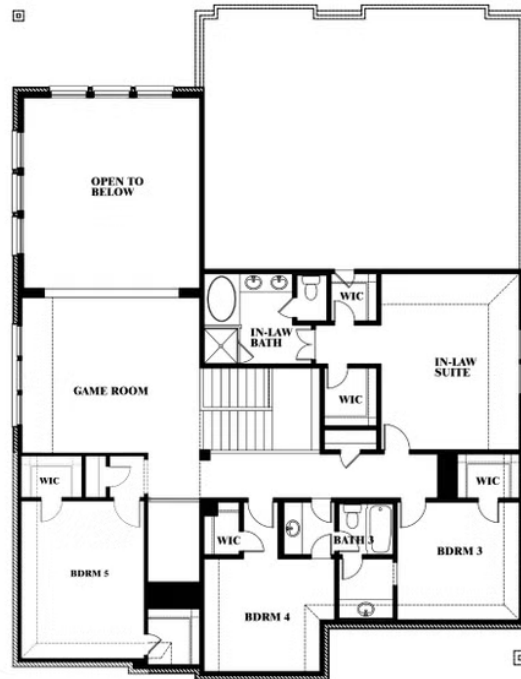
3017 Creekhollow Court

DENTON, TX 76226

BELLFLOWER IV FLOOR PLAN



Bellflower IV Opt. Bed 5 at Media



This brochure is for general informational purposes and is to be used as a guide only. Changes may be made during the development process and floorplans, dimensions, fixtures, fittings, finishes and specifications are subject to change without notice. Window placement, balcony configuration, wardrobe sizes and living areas may vary slightly within each plan type. EQUAL HOUSING OPPORTUNITY



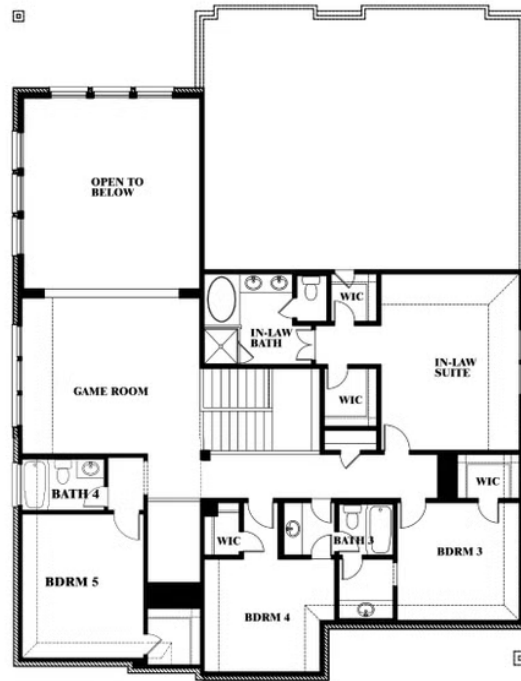
3017 Creekhollow Court

DENTON, TX 76226

BELLFLOWER IV FLOOR PLAN



Bellflower IV Opt. Bed 5/Bath 4 at Media



This brochure is for general informational purposes and is to be used as a guide only. Changes may be made during the development process and floorplans, dimensions, fixtures, fittings, finishes and specifications are subject to change without notice. Window placement, balcony configuration, wardrobe sizes and living areas may vary slightly within each plan type. EQUAL HOUSING OPPORTUNITY