



Dogwood III

CLASSIC SERIES

HAMPTON PARK

3205 ROSEWOOD DRIVE, GLENN HEIGHTS, TX 75154

HOMES FROM

\$440,990

2,333

SQUARE FEET

4

BEDROOMS

3.0

BATHROOMS

2.5

CAR GARAGE

ELEVATION C



ELEVATION A



ELEVATION A

ELEVATION ES



ELEVATION ES

ELEVATION FS



ELEVATION FS

ELEVATION G



ELEVATION G

ELEVATION GS



ELEVATION GS



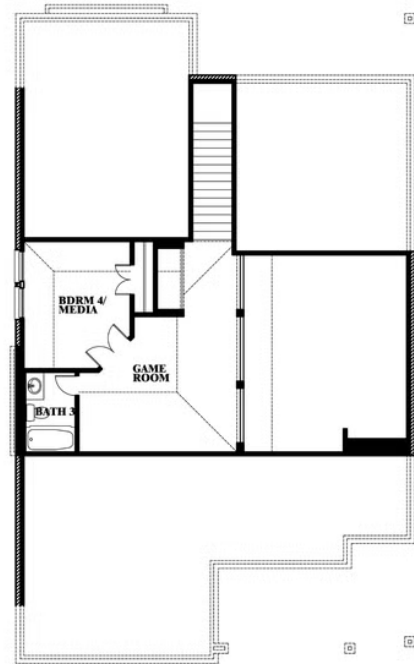
Dogwood III

HAMPTON PARK

3205 ROSEWOOD DRIVE, GLENN HEIGHTS, TX 75154



Dogwood III



This brochure is for general informational purposes and is to be used as a guide only. Changes may be made during the development process and floorplans, dimensions, fixtures, fittings, finishes and specifications are subject to change without notice. Window placement, balcony configuration, wardrobe sizes and living areas may vary slightly within each plan type. EQUAL HOUSING OPPORTUNITY