



624 Godley Ranch

GODLEY, TX 76044

GODLEY RANCH
CYPRESS II FLOOR PLAN

PRICED AT

\$415,000

2459
SQUARE FEET

4
BEDROOMS

3.0
BATHROOMS

2
CAR GARAGE



FORMER MODEL HOME - Bloomfield Homes' Cypress model for sale with a December closing! Features an open, transitional layout with 3 bedrooms on the first floor and a second floor loft with a private bed & bath. Located off the community entrance, the home's architectural exterior and professionally-cared for landscaping stand out! Inside you'll find timeless, designer-selected finishes like stained Shaker cabinets, Laminate Wood floors, and granite surfaces throughout. Plus, custom window seat cushions & window dressings that compliment each room's color palette are included with the sale! The kitchen is ready for action with a large pantry, side by side fridge, and SS appliances. Other loved elements of this home include a covered & bricked front entry with an upgraded 8' front door, tile fireplace, covered rear patio, window seats in the Primary & Family, large closets, huge 1st-floor Primary Suite, and separate laundry. Open to tour every day, come visit to see how bright it shines!



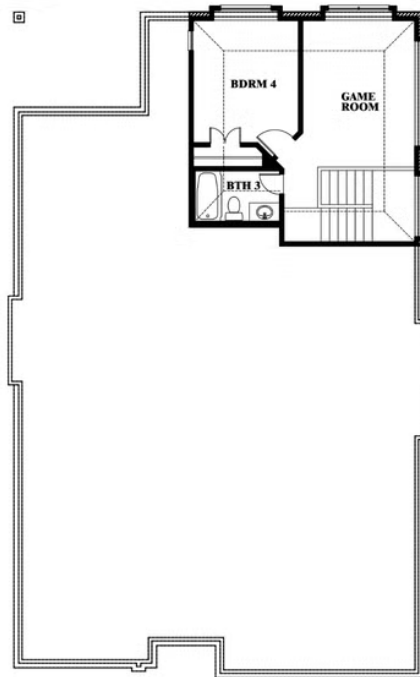
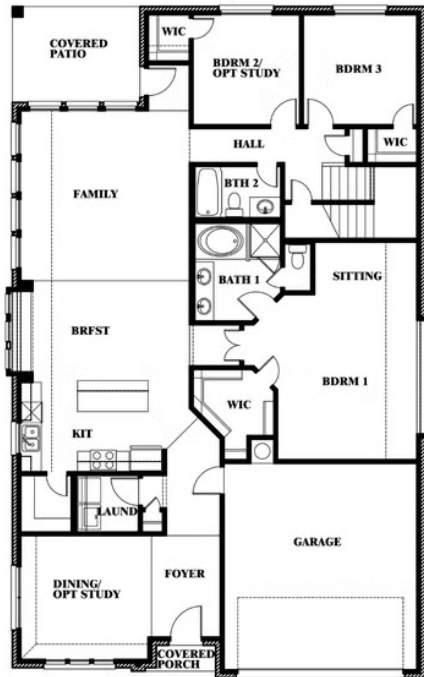
624 Godley Ranch

GODLEY, TX 76044

CYPRESS II FLOOR PLAN



Cypress II



This brochure is for general informational purposes and is to be used as a guide only. Changes may be made during the development process and floorplans, dimensions, fixtures, fittings, finishes and specifications are subject to change without notice. Window placement, balcony configuration, wardrobe sizes and living areas may vary slightly within each plan type. EQUAL HOUSING OPPORTUNITY