



Bellflower II

CLASSIC SERIES

MOCKINGBIRD HILLS

149 MOCKINGBIRD HILL DRIVE, JOSHUA, TX 76058

HOMES FROM

\$536,990 – \$687,990

3,774

SQUARE FEET

4

BEDROOMS

3.5

BATHROOMS

2

CAR GARAGE



BELLFLOWER II ELEVATION C



BELLFLOWER II ELEVATION A

ELEVATION A



BELLFLOWER II ELEVATION B

ELEVATION B



BELLFLOWER II ELEVATION D

ELEVATION D



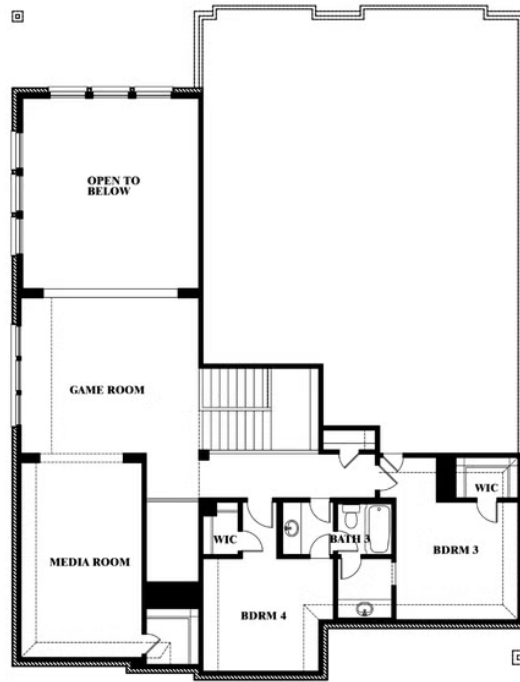
Bellflower II

MOCKINGBIRD HILLS

149 MOCKINGBIRD HILL DRIVE, JOSHUA, TX 76058



Bellflower II



This brochure is for general informational purposes and is to be used as a guide only. Changes may be made during the development process and floorplans, dimensions, fixtures, fittings, finishes and specifications are subject to change without notice. Window placement, balcony configuration, wardrobe sizes and living areas may vary slightly within each plan type. EQUAL HOUSING OPPORTUNITY