



Violet II

CLASSIC SERIES

UNION PARK

1817 RUNNING CREEK TRAIL, LITTLE ELM, TX 76227

HOMES FROM

\$586,990

2,591
SQUARE FEET

3
BEDROOMS

2.5
BATHROOMS

2
CAR GARAGE



VIOLET II ELEVATION A



VIOLET II ELEVATION AS

ELEVATION AS



VIOLET II ELEVATION B

ELEVATION B



VIOLET II ELEVATION C

ELEVATION C



VIOLET II ELEVATION D

ELEVATION D



Violet II

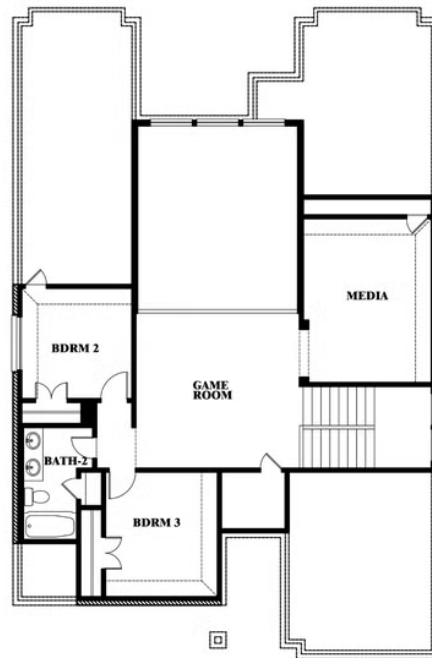
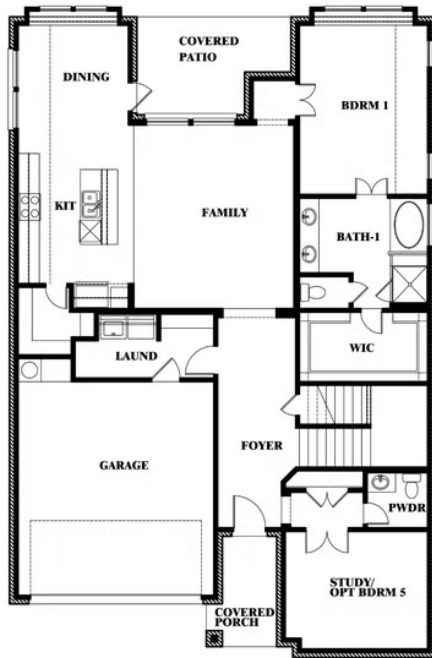
VIOLET II FLOOR PLAN

UNION PARK

1817 RUNNING CREEK TRAIL, LITTLE ELM, TX 76227



Violet II



This brochure is for general informational purposes and is to be used as a guide only. Changes may be made during the development process and floorplans, dimensions, fixtures, fittings, finishes and specifications are subject to change without notice. Window placement, balcony configuration, wardrobe sizes and living areas may vary slightly within each plan type. EQUAL HOUSING OPPORTUNITY



Violet II

VIOLET II FLOOR PLAN WITH OPTIONAL BEDROOM AT STUDY

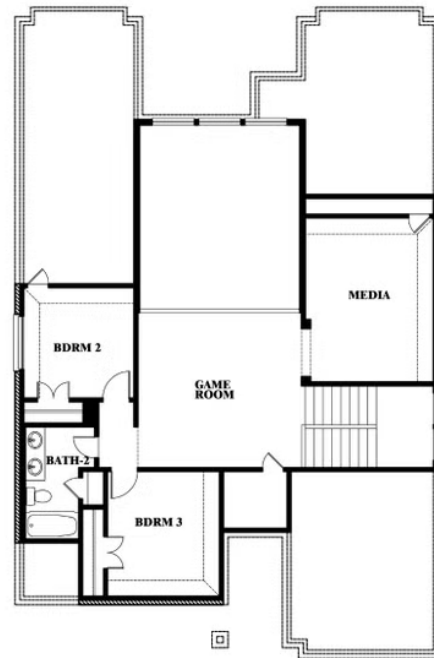
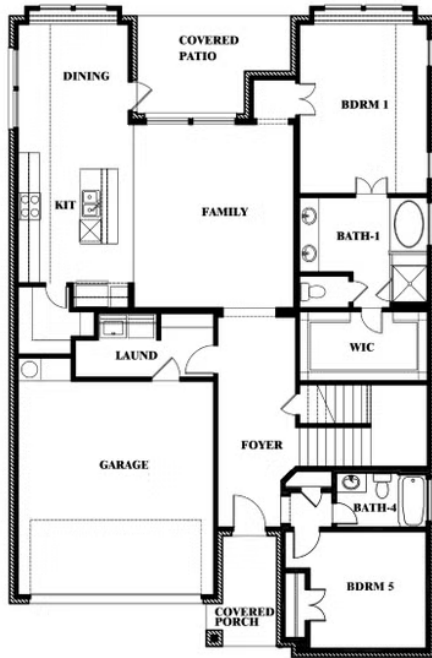
UNION PARK

1817 RUNNING CREEK TRAIL, LITTLE ELM, TX 76227



Violet II

Opt. Bed 5 & Bath 4 at Study



This brochure is for general informational purposes and is to be used as a guide only. Changes may be made during the development process and floorplans, dimensions, fixtures, fittings, finishes and specifications are subject to change without notice. Window placement, balcony configuration, wardrobe sizes and living areas may vary slightly within each plan type. EQUAL HOUSING OPPORTUNITY