



Violet IV

CLASSIC SERIES

SOMERSET

3308 LAKEMONT DRIVE, MANSFIELD, TX 76084

HOMES FROM

\$539,990

2,838

SQUARE FEET

4

BEDROOMS

3.5

BATHROOMS

2

CAR GARAGE



ELEVATION A



ELEVATION AS

ELEVATION AS



ELEVATION B

ELEVATION B



ELEVATION C

ELEVATION C



ELEVATION D

ELEVATION D



Violet IV

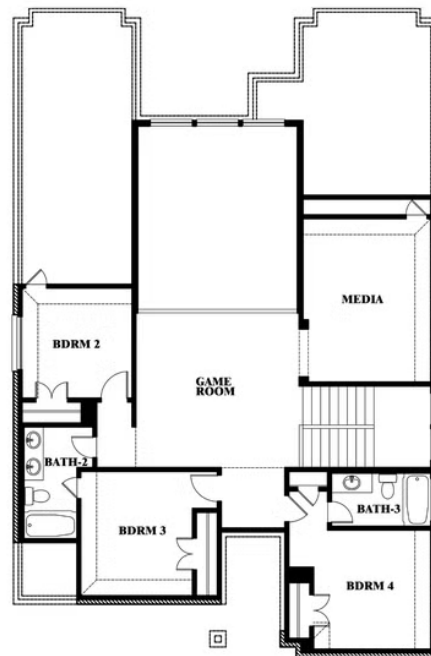
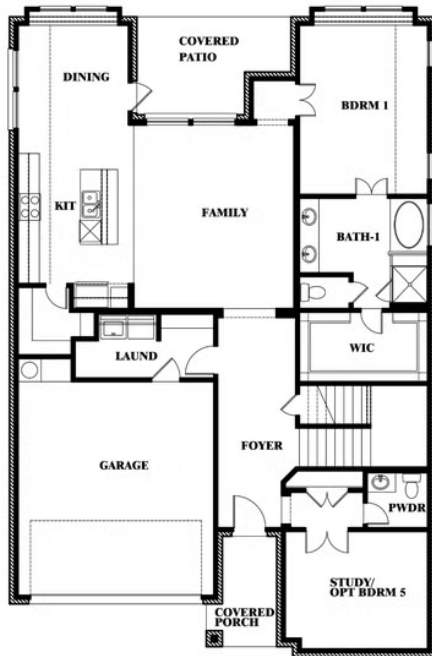
VIOLET IV FLOOR PLAN

SOMERSET

3308 LAKEMONT DRIVE, MANSFIELD, TX 76084



Violet IV



This brochure is for general informational purposes and is to be used as a guide only. Changes may be made during the development process and floorplans, dimensions, fixtures, fittings, finishes and specifications are subject to change without notice. Window placement, balcony configuration, wardrobe sizes and living areas may vary slightly within each plan type. EQUAL HOUSING OPPORTUNITY



Violet IV

VIOLET IV FLOOR PLAN WITH OPTIONAL BEDROOM AT STUDY

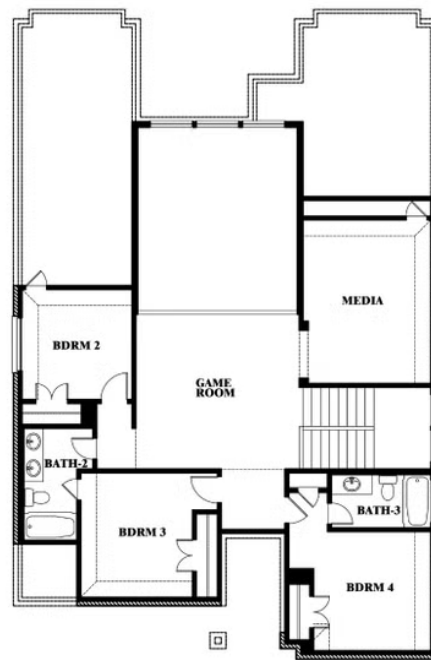
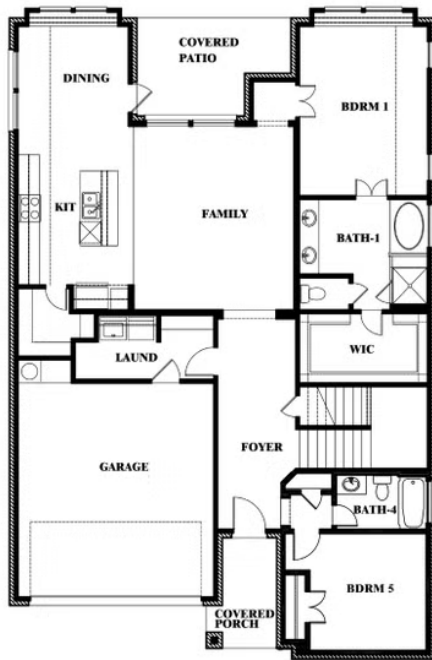
SOMERSET

3308 LAKEMONT DRIVE, MANSFIELD, TX 76084



Violet IV

Opt. Bed 5 & Bath 4 at Study



This brochure is for general informational purposes and is to be used as a guide only. Changes may be made during the development process and floorplans, dimensions, fixtures, fittings, finishes and specifications are subject to change without notice. Window placement, balcony configuration, wardrobe sizes and living areas may vary slightly within each plan type. EQUAL HOUSING OPPORTUNITY