



# Bellflower III

CLASSIC SERIES

## WILLOW WOOD

809 CLAREMONT COURT, MCKINNEY, TX 75071

HOMES FROM

**\$733,990**

**3,979**

SQUARE FEET

**5**

BEDROOMS

**4.5**

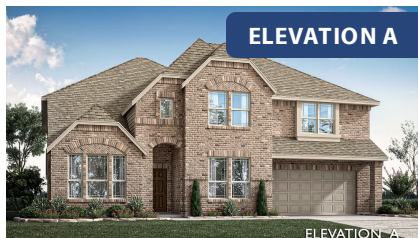
BATHROOMS

**2**

CAR GARAGE



**ELEVATION C**



**ELEVATION A**

ELEVATION A



**ELEVATION AS**

ELEVATION AS



**ELEVATION B**

ELEVATION B



**ELEVATION D**

ELEVATION D



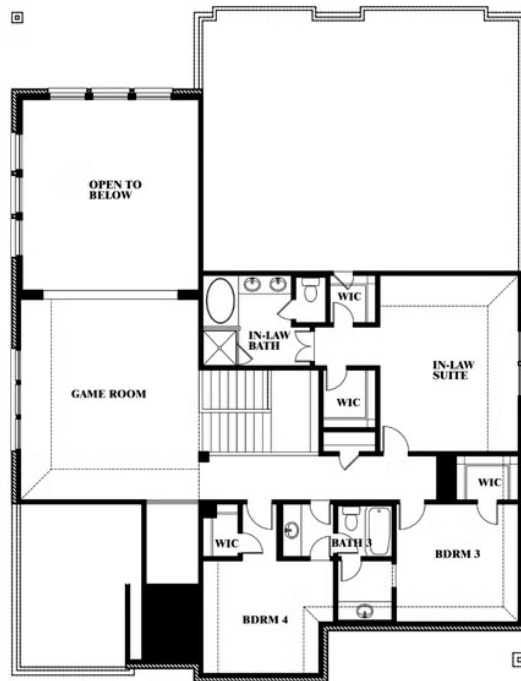
# Bellflower III

## WILLOW WOOD

809 CLAREMONT COURT, MCKINNEY, TX 75071



## Bellflower III



This brochure is for general informational purposes and is to be used as a guide only. Changes may be made during the development process and floorplans, dimensions, fixtures, fittings, finishes and specifications are subject to change without notice. Window placement, balcony configuration, wardrobe sizes and living areas may vary slightly within each plan type. EQUAL HOUSING OPPORTUNITY