



Magnolia II

CLASSIC SERIES

WILLOW WOOD

809 CLAREMONT COURT, MCKINNEY, TX 75071

HOMES FROM

\$648,990

3,430

SQUARE FEET

4

BEDROOMS

2.5

BATHROOMS

2

CAR GARAGE



ELEVATION A



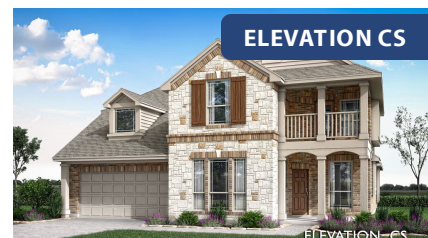
ELEVATION AS

ELEVATION-AS



ELEVATION C

ELEVATION-C



ELEVATION CS

ELEVATION-CS



ELEVATION D

ELEVATION-D



ELEVATION F

ELEVATION-F



Magnolia II

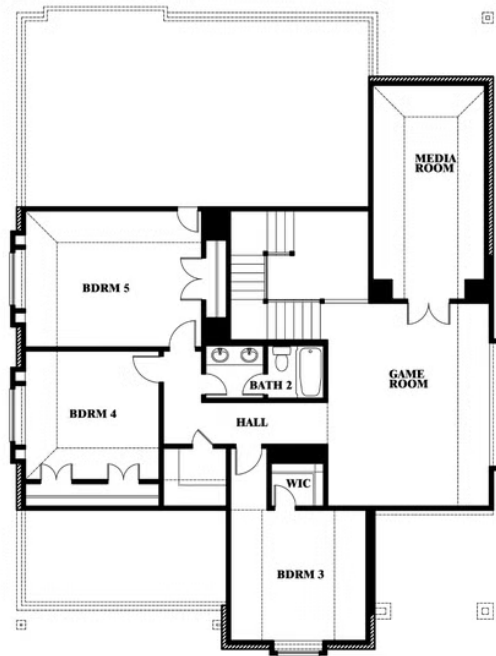
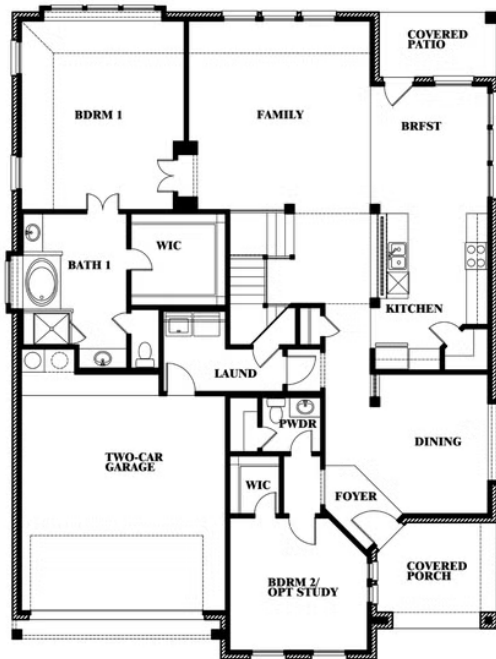
MAGNOLIA II FLOOR PLAN

WILLOW WOOD

809 CLAREMONT COURT, MCKINNEY, TX 75071



Magnolia II



This brochure is for general informational purposes and is to be used as a guide only. Changes may be made during the development process and floorplans, dimensions, fixtures, fittings, finishes and specifications are subject to change without notice. Window placement, balcony configuration, wardrobe sizes and living areas may vary slightly within each plan type. EQUAL HOUSING OPPORTUNITY