



# 2502 Mesa Verde Lane

MELISSA, TX 75454

**LEGACY RANCH**

VIOLET IV FLOOR PLAN

PRICED AT

~~\$712,575~~ **\$649,827**

**2849**

SQUARE FEET

**4**

BEDROOMS

**3.5**

BATHROOMS

**3**

CAR GARAGE



Bloomfield's Violet IV greets you with a stunning brick and stone façade, evoking elegance. Step inside to discover high vaulted ceilings enhancing the sense of grandeur in the Family Room. Walk into the Deluxe Kitchen, with custom cabinets and stainless steel appliances, appealing to food enthusiasts, while Quartz countertops add luxury. Wood-look tile flows throughout and adds warmth & charm. Gather around the Stone-to-Ceiling Fireplace, wood-burning with a gas starter, in the spacious Family Room. Versatile spaces include the Formal Dining Room and Study. Relax in the Primary Suite's tranquility with its ensuite bathroom and walk-in closet, while upstairs, the Game Room and Media offer entertainment. With an 8' Front Door, 3-car garage, and gas stub for grill, comfort and convenience are ensured. Situated against a serene greenbelt, the Violet IV blends luxury with natural beauty. Visit Bloomfield at our model home in Legacy Ranch to learn more!



## 2502 Mesa Verde Lane

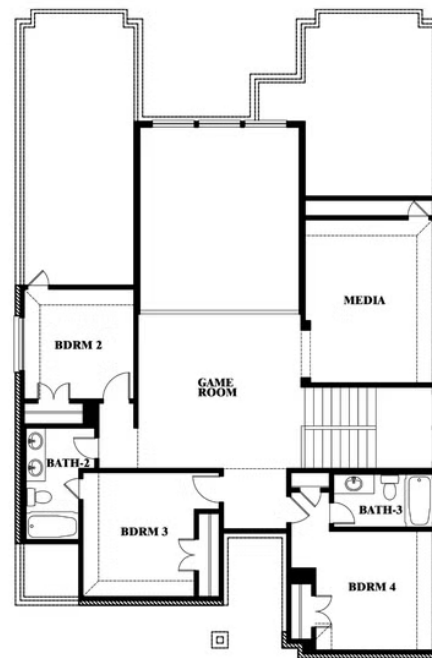
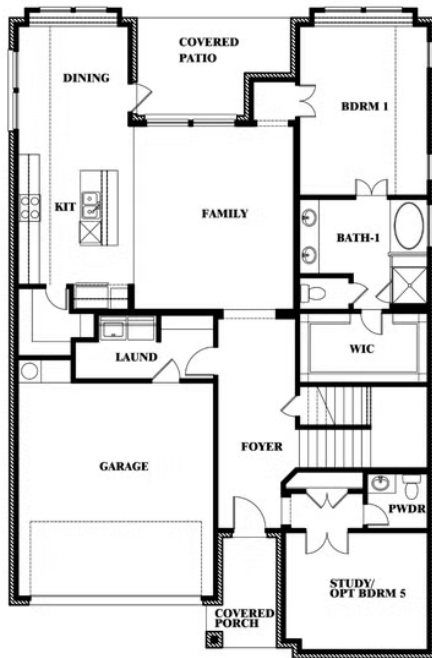
MELISSA, TX 75454

VIOLET IV FLOOR PLAN

**VIOLET IV FLOOR PLAN**



### Violet IV



This brochure is for general informational purposes and is to be used as a guide only. Changes may be made during the development process and floorplans, dimensions, fixtures, fittings, finishes and specifications are subject to change without notice. Window placement, balcony configuration, wardrobe sizes and living areas may vary slightly within each plan type. EQUAL HOUSING OPPORTUNITY