



Dewberry III

CLASSIC SERIES

WINDSONG RANCH

4250 OLD ROSEBUD LANE, PROSPER, TX 75078

HOMES FROM

\$706,990 – \$773,990

3,261
SQUARE FEET

5
BEDROOMS

3.5
BATHROOMS

2
CAR GARAGE



ELEVATION A



ELEVATION AS

ELEVATION AS



ELEVATION C

ELEVATION C



ELEVATION CS

ELEVATION CS



ELEVATION D

ELEVATION D



Dewberry III

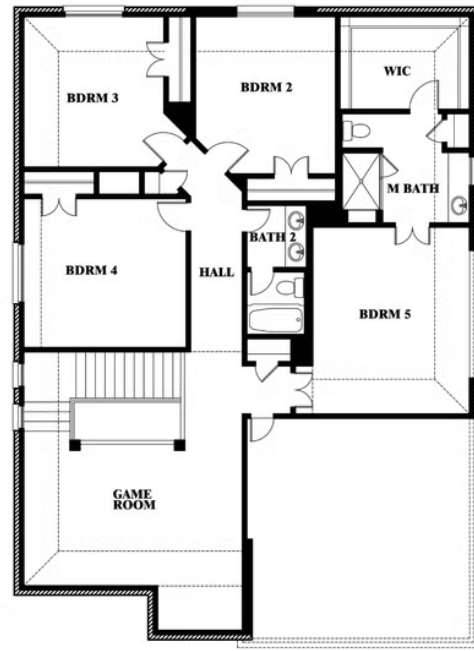
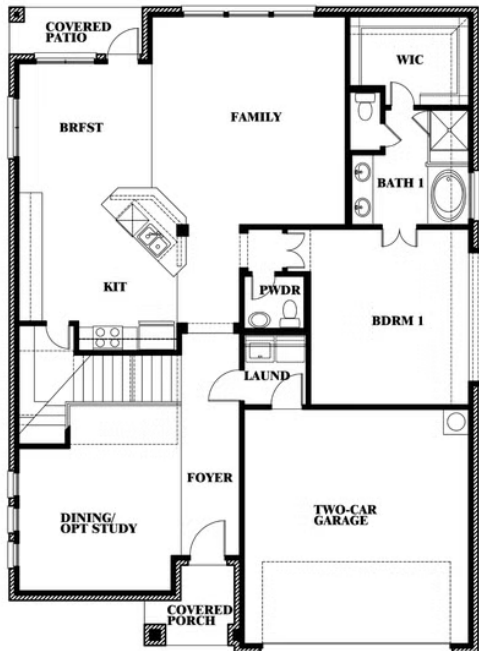
WINDSONG RANCH

4250 OLD ROSEBUD LANE, PROSPER, TX 75078

DEWBERRY III FLOOR PLAN



Dewberry III



This brochure is for general informational purposes and is to be used as a guide only. Changes may be made during the development process and floorplans, dimensions, fixtures, fittings, finishes and specifications are subject to change without notice. Window placement, balcony configuration, wardrobe sizes and living areas may vary slightly within each plan type. EQUAL HOUSING OPPORTUNITY