



Violet III

CLASSIC SERIES

SABLE CREEK

120 CREEKSIDE DRIVE, SANGER, TX 76266

HOMES FROM

\$455,990

2,628

SQUARE FEET

4

BEDROOMS

3.5

BATHROOMS

2

CAR GARAGE



ELEVATION A



ELEVATION AS

ELEVATION AS



ELEVATION B

ELEVATION B



ELEVATION C

ELEVATION C



ELEVATION D

ELEVATION D



Violet III

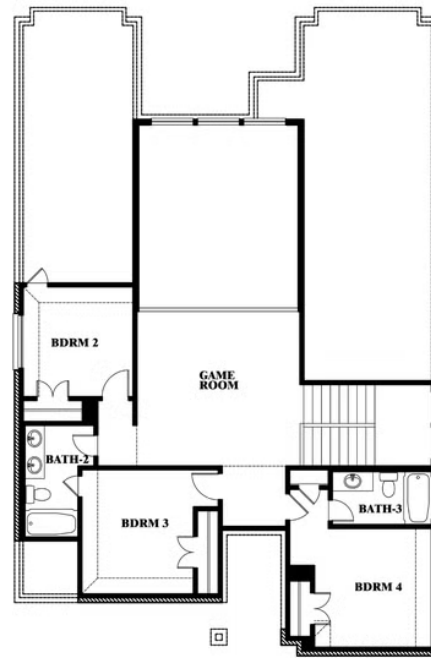
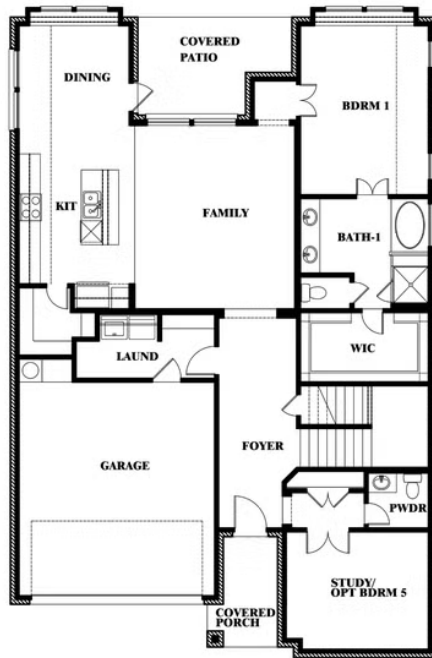
VIOLET III FLOOR PLAN

SABLE CREEK

120 CREEKSIDE DRIVE, SANGER, TX 76266



Violet III



This brochure is for general informational purposes and is to be used as a guide only. Changes may be made during the development process and floorplans, dimensions, fixtures, fittings, finishes and specifications are subject to change without notice. Window placement, balcony configuration, wardrobe sizes and living areas may vary slightly within each plan type. EQUAL HOUSING OPPORTUNITY



Violet III

SABLE CREEK

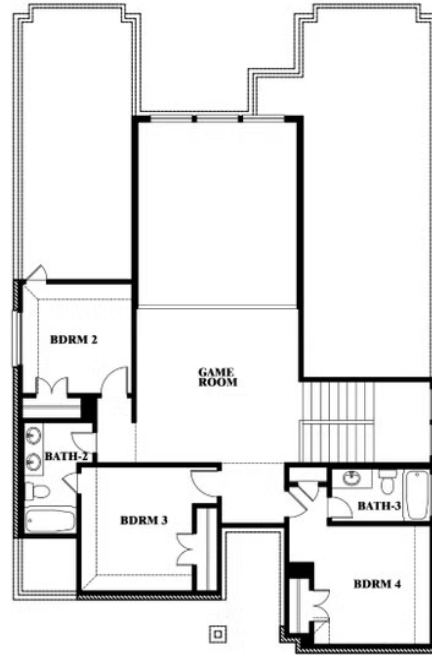
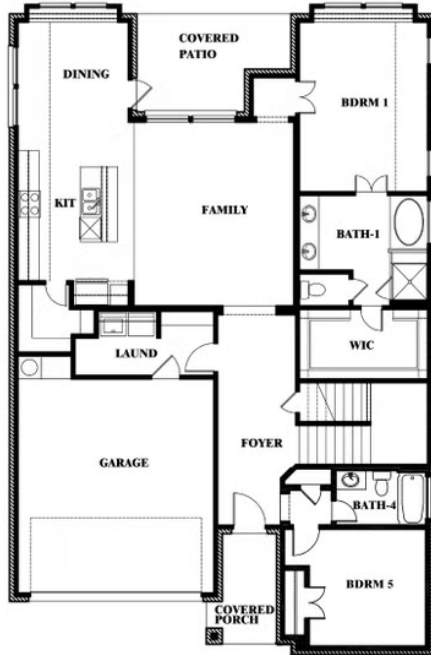
120 CREEKSIDE DRIVE, SANGER, TX 76266

VIOLET III FLOOR PLAN WITH BEDROOM AT STUDY



Violet III

Opt. Bed 5 & Bath 4 at Study



This brochure is for general informational purposes and is to be used as a guide only. Changes may be made during the development process and floorplans, dimensions, fixtures, fittings, finishes and specifications are subject to change without notice. Window placement, balcony configuration, wardrobe sizes and living areas may vary slightly within each plan type. EQUAL HOUSING OPPORTUNITY